

9.01.21

TBAT: Order amounts

Draw the line to the correct number on the scales.



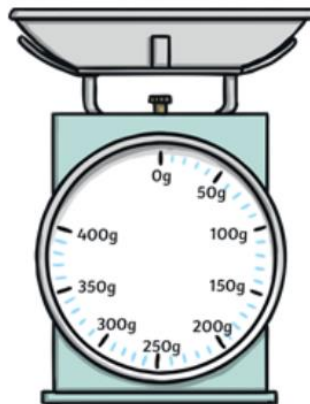
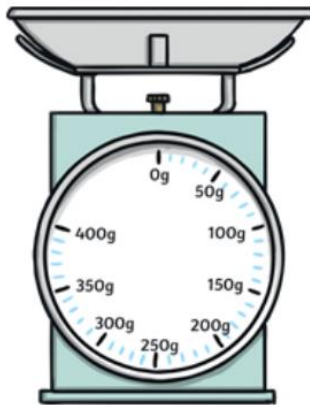
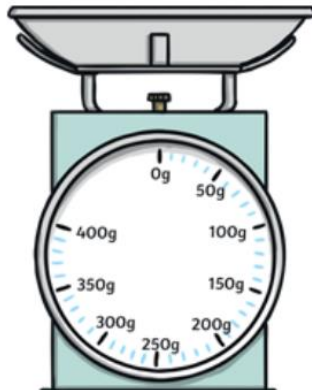
400g



240g



80g



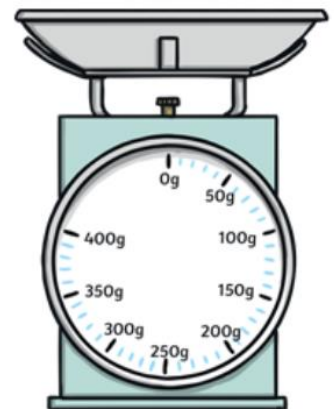
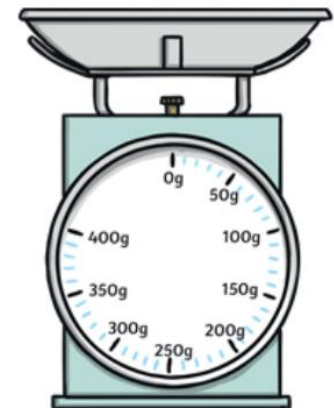
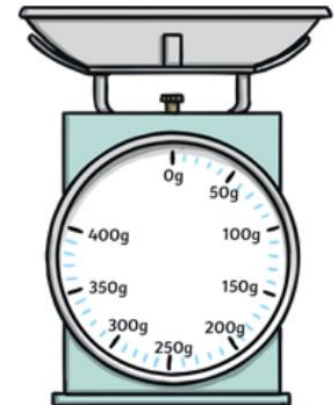
150g



360g



100g



9.01.21

TBAT: Order amounts



80g



240g



150g

Put the items in order!



360g



400g



100g



9.01.21

TBAT: Order amounts

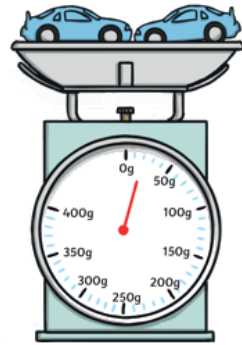
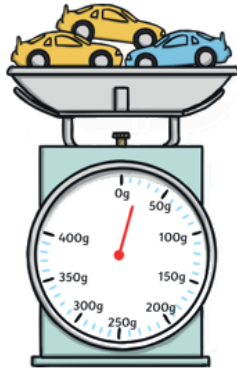
Tuesday Challenge

Which is Heavier?

Look at these two weighing scales. Which colour toy car is heavier?
Explain your reasoning.

The yellow car = 5g

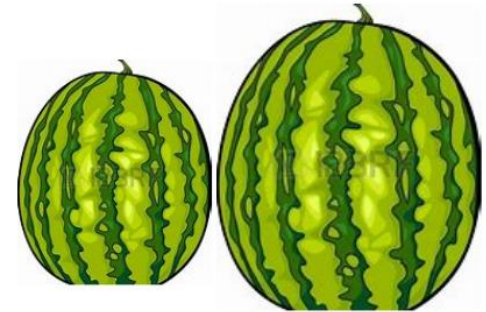
The blue car = 10g



Here are two watermelons.

The one in the left weighs 7.35kg.

The one on the right of weighs
8.20kg.



In a growing competition, a melon gets a
point for each **gram** that it weighs.
How many points does each melon gain?

Remember: 1000g = 1kg