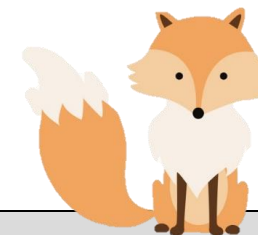
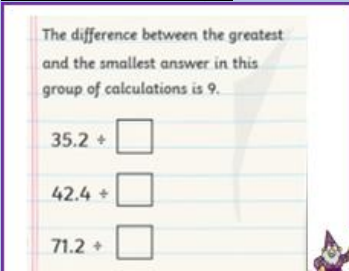
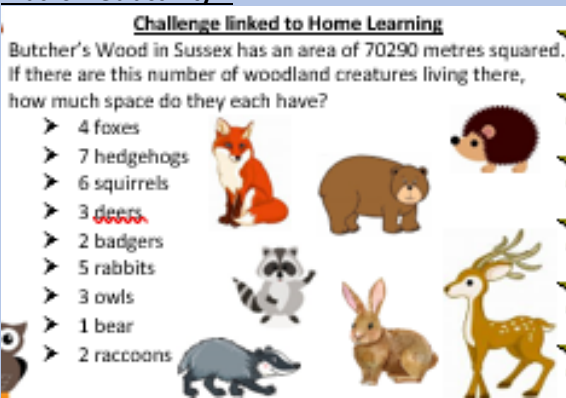




## Year 6 Weekly Timetable- Into the woods





Week 5 – 18.05.20



Reading	Spelling KS2	Day	English	Maths	Topic
Read for up to 30 minutes each day and choose an activity to do each day	The spellings to learn this week are: <b>controversy</b> <b>disastrous</b> <b>government</b> <b>nuisance</b> <b>interfere</b> <b>stomach</b> <b>twelfth</b> <b>profession</b> <b>occur</b> <b>opportunity</b>	Monday	<p><b>Topic web activity –</b> Imagine you are lost in the woods and an animal helps you to find your way home. Write a story about what happens OR rewrite your own version of “Going on a Bear Hunt” or “The Owl who was Afraid of the Dark”.</p> <p><b>Optional learning activities-</b> Bitesize - <a href="#">Hyphens and dashes</a> Oaks - <a href="#">Daily lesson</a></p>	<p><b>Maths web activity –</b></p>  <p><b>Additional Learning Activities-</b> Bitesize link - <a href="#">Division</a> N-rich – <a href="#">Mixed up clock</a> White Rose - <a href="#">Daily lesson</a></p>	<p><b>Personal, Social and Health Education</b></p> <p>What impact have people had on woodland creatures? What can we do to help them? Write down or discuss your ideas with somebody at home.</p>
Draw your favourite part of the story		Tuesday	<p><b>Topic web activity –</b> Continue with your story – can you add extra detail and description?</p> <p><b>Optional learning activities-</b> Bitesize link - <a href="#">Bullet points</a> Oaks - <a href="#">Daily lesson</a></p>	<p><b>Maths web activity –</b></p> <p><b>Challenge linked to Home Learning</b></p> <p>Butcher's Wood in Sussex has an area of 70290 metres squared. If there are this number of woodland creatures living there, how much space do they each have?</p> <ul style="list-style-type: none"> <li>&gt; 4 foxes</li> <li>&gt; 7 hedgehogs</li> <li>&gt; 6 squirrels</li> <li>&gt; 3 <del>deers</del></li> <li>&gt; 2 badgers</li> <li>&gt; 5 rabbits</li> <li>&gt; 3 owls</li> <li>&gt; 1 bear</li> <li>&gt; 2 raccoons</li> </ul>  <p><b>Additional Learning Activities-</b> Bitesize link- <a href="#">Division with remainders</a> N-rich – <a href="#">Make it correct</a> White Rose - <a href="#">Daily lesson</a></p>	<p><b>Creative</b></p> <p>Leaf Art – Collect some leaves and make them into a picture of a woodland animal</p>
Write about your favourite character	Write these spellings using different coloured pens				
Predict what might happen next	Write these words into sentences				
Write an alternative ending or chapter for then book	Look, cover, write and check				
	Write these spellings in different ways				

## Year 6 Weekly Timetable- Into the woods

Week 5 – 18.05.20

<div style="background-color: #d9ead3; padding: 10px; text-align: center;"> <p>Draw an alternative front cover</p>  </div>	<div style="background-color: #f4cccc; padding: 10px; text-align: center;"> <p>such as bubble writing, wavy writing, curly writing etc</p> </div>	<p><b>Wednesday</b></p>	<p><b>Topic web activity –</b> Linked to the Hide’n’Seek game in the PE section, write rhyming couplets to help someone find where you have hidden one of the objects.</p> <p><b>Additional Learning Activities-</b> <b>Bitesize link - <a href="#">Commas</a></b> <b>Oaks - <a href="#">Daily lesson</a></b></p>	<p><b>Maths web activity –</b></p> <div style="border: 1px solid black; padding: 5px; margin-bottom: 10px;">  <p>Can you order the digits 1, 2 and 3 to make a number which is divisible by 3? And when the final digit is removed it becomes a two-digit number divisible by 2, then finally a one-digit number divisible by 1? Is there more than one possible answer? Now try with the digits 1, 2, 3 and 4 to make a number divisible by 4, remove the final digit to make a three digit number that is divisible by 3, then remove the next to make a two-digit number divisible by 2 and finally a one-digit number divisible by 1. Now try the same with the digits 1, 2, 3, 4 and 5.</p> </div> <p><b>Additional Learning Activities-</b> <b>Bitesize link- <a href="#">Prime numbers</a></b> <b>N-rich - <a href="#">Prime into square</a></b> <b>White Rose - <a href="#">Daily lesson</a></b></p>	<p style="text-align: center;"><b><u>Physical Education</u></b></p> <p>Hide and Seek: Imagine you an animal hiding its food. Find some objects and ask someone to hide them in different locations (not under or in things though – it will be too difficult). Go on a hunt to find them.</p> 
		<p><b>Thursday</b></p>	<p><b>Topic web activity –</b> Think about creatures found in the British Woodland and write a free-verse poem (doesn’t have to rhyme!) in the shape of the animal. Examples can be found attached or on the website</p> <p><b>Additional Learning Activities-</b> <b>Bitesize link- <a href="#">Prepositions</a></b> <b>Oaks - <a href="#">Daily lesson</a></b></p>	<p><b>Maths web activity –</b></p> <div style="border: 1px solid black; padding: 5px; margin-bottom: 10px;"> <p>What is the largest possible five-digit number divisible by 12 that you can make from the digits 1, 3, 4, 5 and one more digit? ??</p> </div> <p><b>Additional Learning Activities-</b> <b>Bitesize link- <a href="#">Factors</a></b> <b>Nrich - <a href="#">Curious number</a></b> <b>White Rose - <a href="#">Daily lesson</a></b></p>	<p style="text-align: center;"><b><u>Communication and Language</u></b></p> <p>Woodland Animal “Top Trumps” (if you’ve not made a set already!)</p>
		<p><b>Friday</b></p>	<p><b>Topic web activity –</b> Create a fact file about your favourite woodland animal. Find out about all the different breeds of that animal.</p> <p><b>Additional Learning Activities-</b> <b>Bitesize link- <a href="#">Relative clause</a></b> <b>Oaks - <a href="#">Daily lesson</a></b></p>	<p><b>Maths web activity –</b></p> <div style="border: 1px solid black; padding: 5px; margin-bottom: 10px;"> <p>Six whole pizzas weigh 8.16kg altogether. Each whole pizza is sliced up into eight equal parts. How much does one slice of pizza weigh?</p>  </div> <p><b>Additional Learning Activities-</b> <b>Bitesize link- <a href="#">Algebra</a></b> <b>N-rich - <a href="#">Party table</a></b> <b>White Rose - <a href="#">Daily lesson</a></b></p>	<p style="text-align: center;"><b><u>Science, History and Geography</u></b></p> <p>Create a food chain for different woodland creatures (remember to start with a plant!)</p> <p>Using Google Maps, find out what woods are closest to Southwick. Look at the different woods. Which one would you most like to visit and why?</p>

**Year 6 Weekly Timetable- Into the woods**

**Week 5 – 18.05.20**