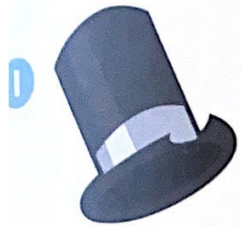
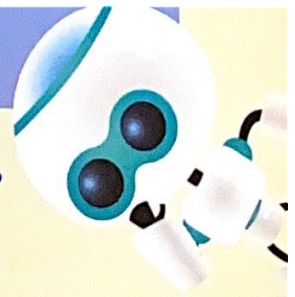


Answer these questions.

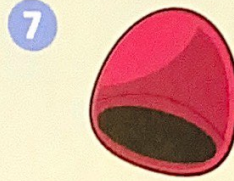
Find 10%
of the amount.
Use this to find
the percentage given.



30% of £12



40% of £16



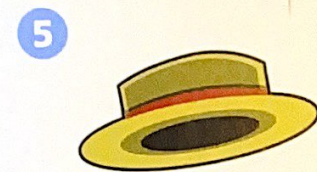
30% of £19



20% of £17



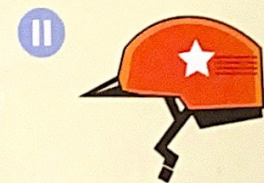
40% of £14



20% of £27



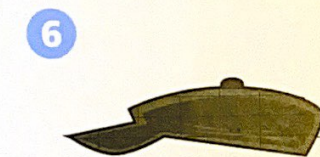
40% of £23



40% of £38



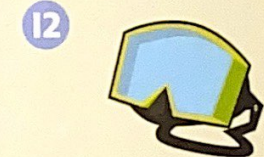
30% of £15



60% of £22



30% of £42



30% of £29

13 15% of £80 =

14 35% of £60 =

15 90% of £11 =

16 95% of £12 =

Find 10% and use
it to help you find
the answers.



Can you find 10% of $\frac{1}{2}$ of 500?
What would be an easier calculation
which would give the same answer?



I am confident with finding equivalent fractions and percentages.

Apply the discount to each item to work out the sale price.

1

Item	Original price	10% discount	Sale price
Electric mixer	£45	£4.50	£40.50
Toaster	£18		
Kettle	£32		

2

Item	Original price	25% discount	Sale price
Coffee maker	£56		
Blender	£42		
Grill	£39		

3

Item	Original price	15% discount	Sale price
Water purifier	£35		
Slow cooker	£52		
Waffle maker	£47		



An item was reduced by 10%. Its new price is £45. What was its original price?

I am confident with finding percentages of amounts